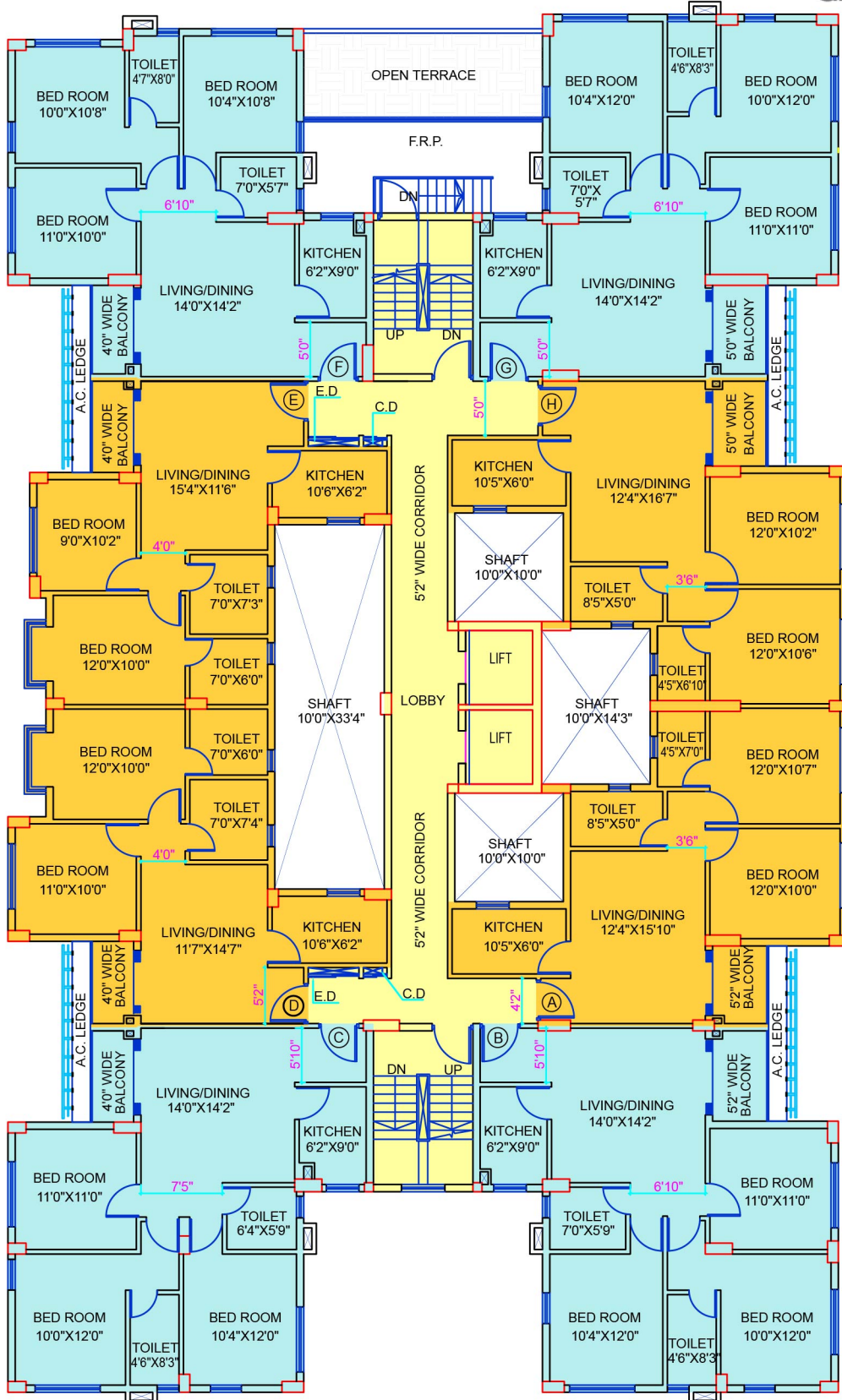


BLOCK-6



urban greens
Live Green Live Smart



Type	B.U.A
A	731 sq.ft
B	942 sq.ft
C	932 sq.ft
D	721 sq.ft
E	715 sq.ft
F	883 sq.ft
G	938 sq.ft
H	746 sq.ft

TYPICAL FLOOR PLAN (1ST. TO 8TH.)



“URBAN GREENS”

AT, ATGHARA, RAJARHAT ROAD, KOLKATA

ARCHITECTS
AGRAWAL & AGRAWAL